

Protecting river catchments and the Great Barrier Reef following flood events

Misko Ivezich

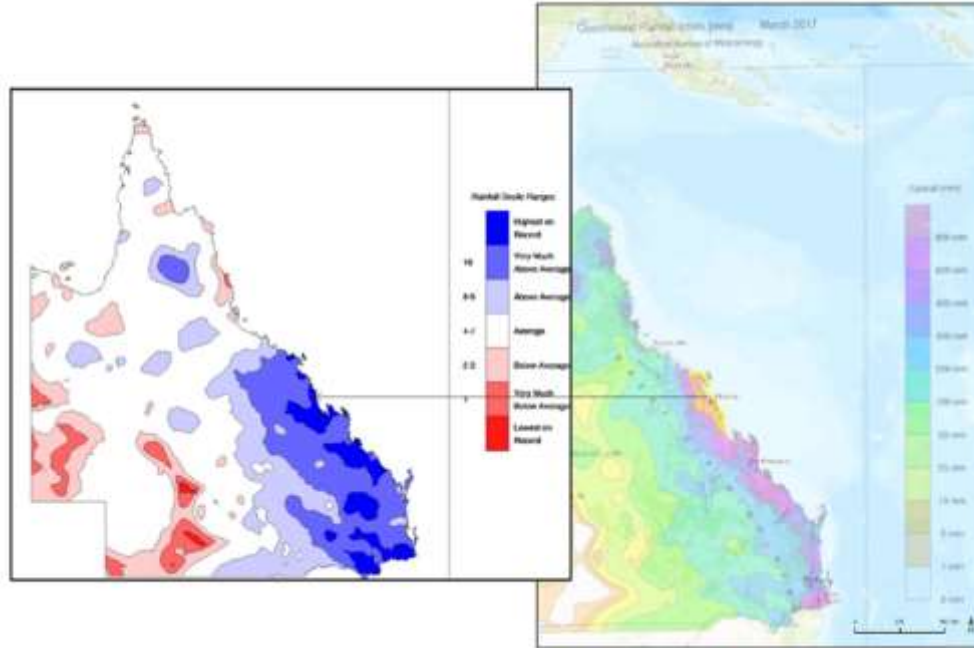














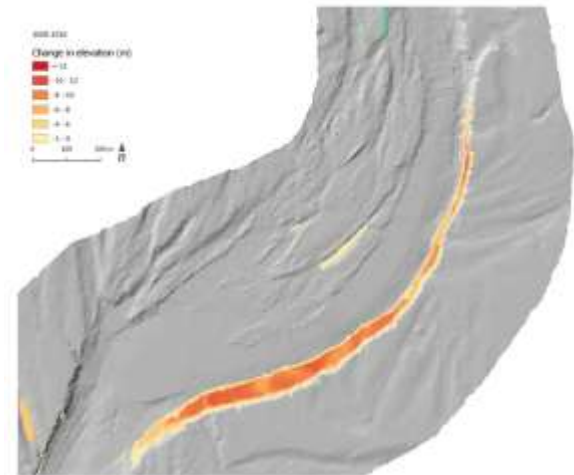
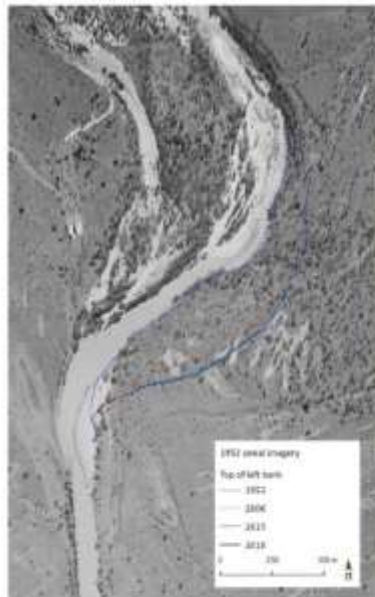


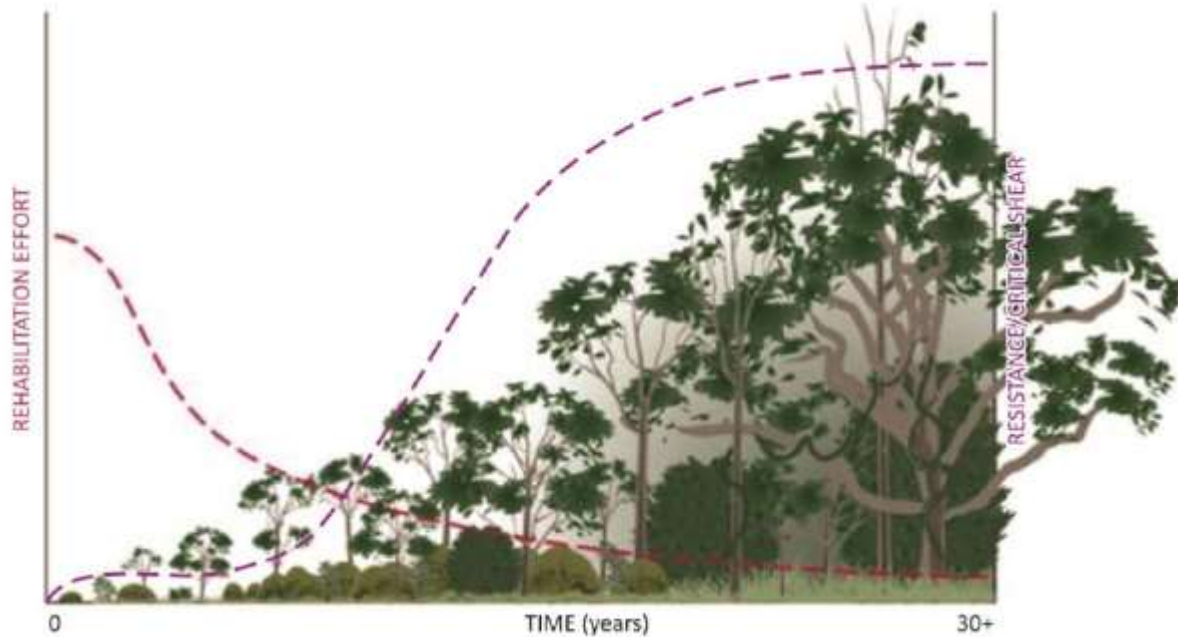


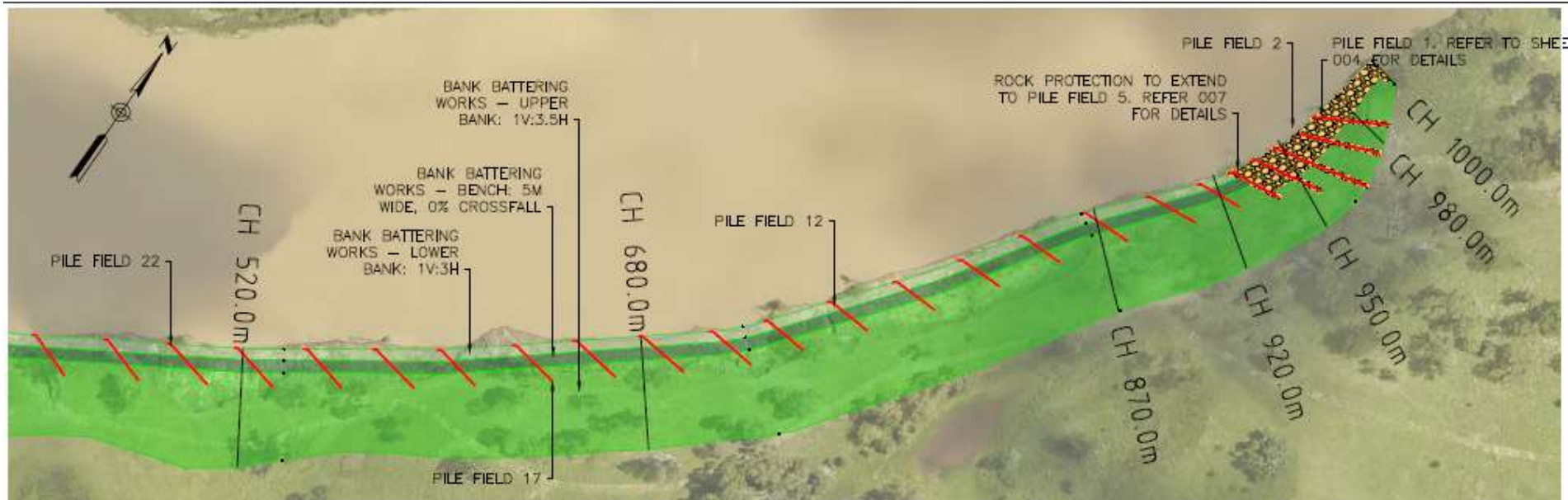
Values/Assets	Objective
Agricultural land	Increase the erosion resistance of channel bed and banks to limit bank retreat where agricultural land is threatened
Public assets	Protect public assets from erosion
Existing system repair works	Protect and enhance recent system repair works to enable them to achieve their desired outcomes (i.e. reduce the impact of future floods)
Great Barrier Reef	Reduce sediment and nutrient loads to the Great Barrier Reef Marine Park
River health	Protect and enhance the instream and riparian values of the waterways

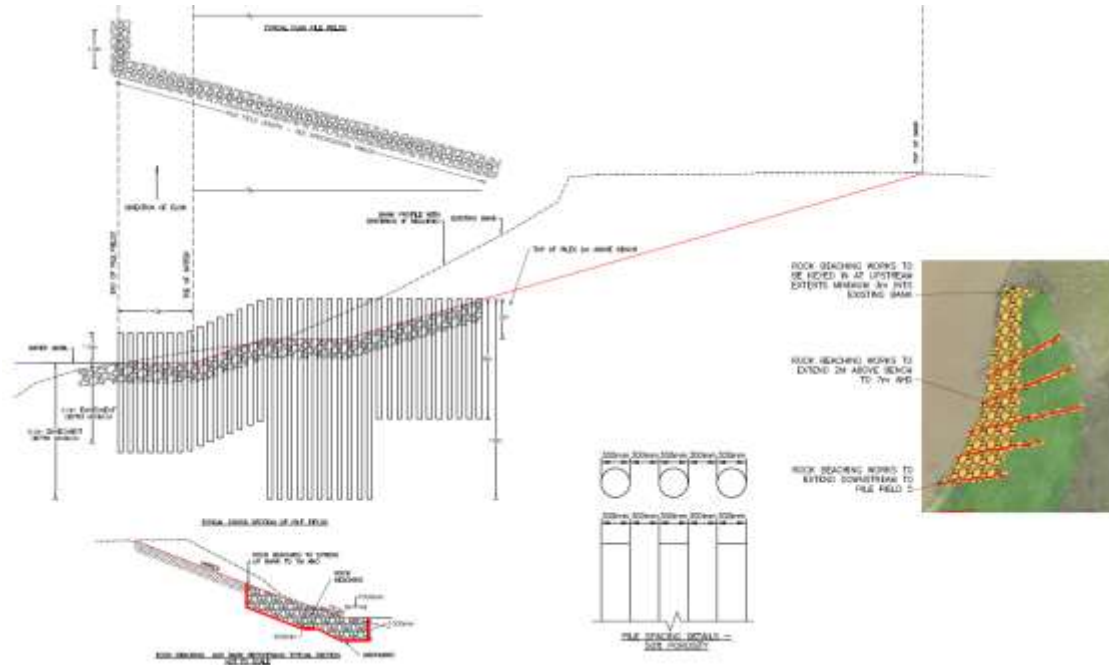






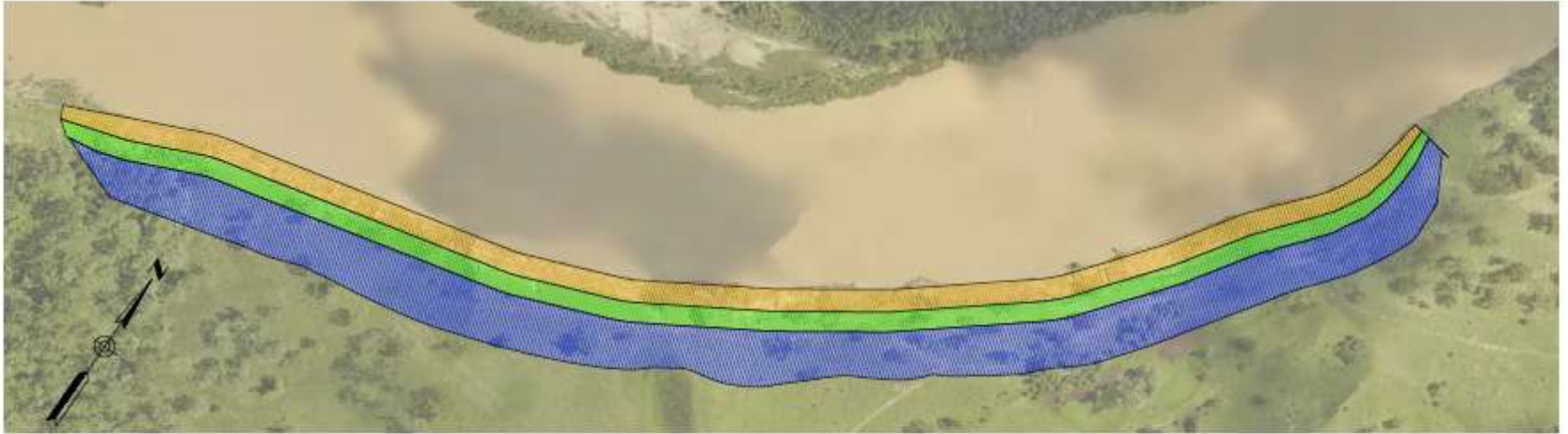















LEGEND

-  TOP & OVERBANK ZONE
-  MID BANK ZONE
-  LOW BANK ZONE

Key learnings from the flood recovery processes:

- Important to have a good baseline understanding of stream condition
- Important to have a shared understanding of waterway values and objectives amongst stakeholders
- Ongoing funding required to effectively increase flood resilience