

The path to water sovereignty

Cultural Flows in action



Outline

- The challenge
- First-Nations-led research
- The outputs
- Putting it into practice
- The research in action



NATIONAL
CULTURAL FLOWS
RESEARCH PROJECT



The challenge

‘Lands and waters are sick and unhealthy’

‘Our sacred places have been damaged and destroyed’

- *Echuca Declaration, 2007*

How to determine flow requirements to support First Nations’ objectives?

How to acquire and hold water?



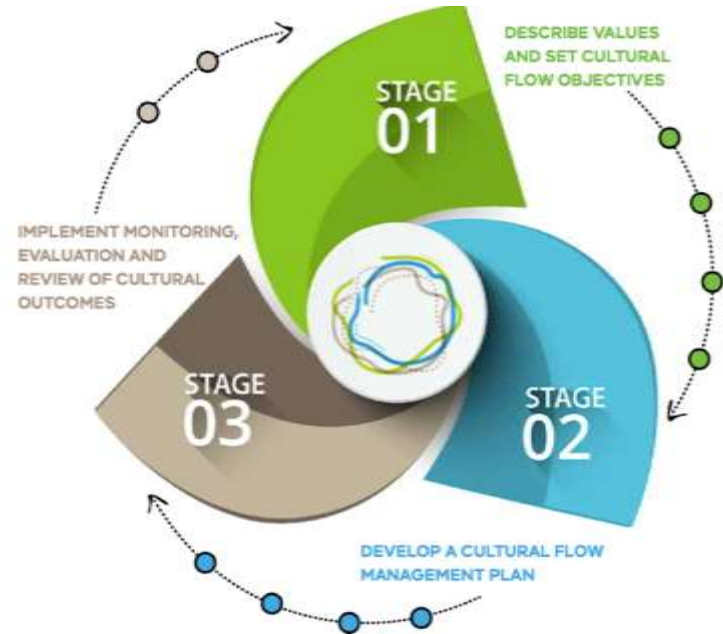
First-Nations-led research

- 8+ years of research
- Aboriginal governance
- \$1.4m Commonwealth funding
- 8 research components
- 2 case study sites



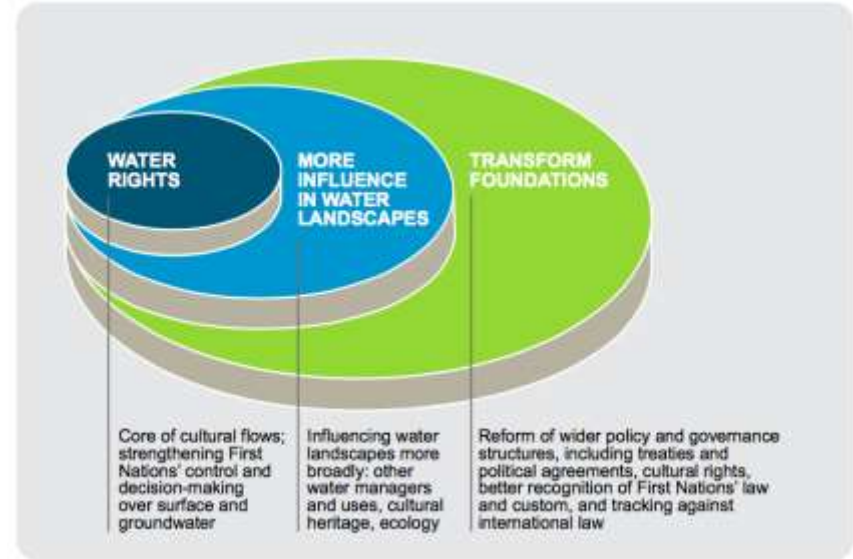
The outputs

- **A water planning tool for First Nations**
- Identifying flow objectives and watering requirements
- Developing Cultural Flows management plans
- Monitoring and evaluation



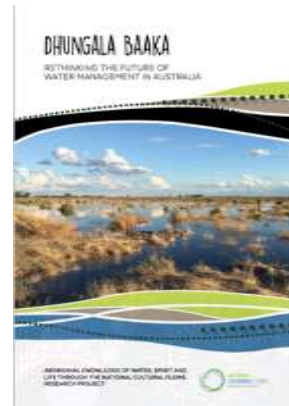
The outputs

- **A Policy and Legal reform guide**
- Identifying three key pathways to strengthen Aboriginal rights and access
- Providing model provisions to change law and policy



The outputs

- **Technical reports and guidance**
- Ecological characterization reports
- Monitoring and evaluation
- hydrological and hydraulic modeling reports



Putting it into practice

- **Implementing and embedding**
- Funding for Cultural Flows assessments
- Inform water planning
- Amend water policy and legislation
- Secure cultural flows



The research in action – Tati Tati Nation

- Tati Tati AWA project, key sites
- Build Tati Tati engagement
- Follow up project and funding
- Apply Cultural Flows tool
- Building agency and influence



Thank you! Questions?



www.culturalflows.com.au

www.mldrin.org.au

